

# Unit photographs

## Slencrest Switch- tripping Units

01622 741122

Rugged steel  
construction

Designed for a  
lifetime

Sealed lead-  
acid batteries

No battery  
maintenance

Wall mounted

Unit & battery  
from single  
manufacturer

110V or 240Vrms  
supply

Lightning  
protected

esi standard  
50-18 approved

One-off design  
changes possible

P4225 24V



Battery pack  
2No. P4295



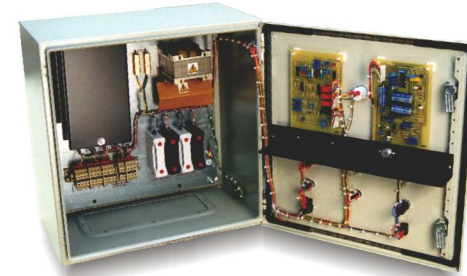
P4200 30V



Battery pack  
1No. P4291



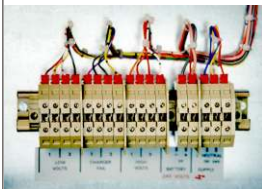
P4205 30V



Battery pack  
2No. P4291



P4205 'X' 30V



Battery pack  
2No. P4291

P4206 30V



Battery pack  
2No. P4291

P4215 48V



Battery pack  
2No. P4293

